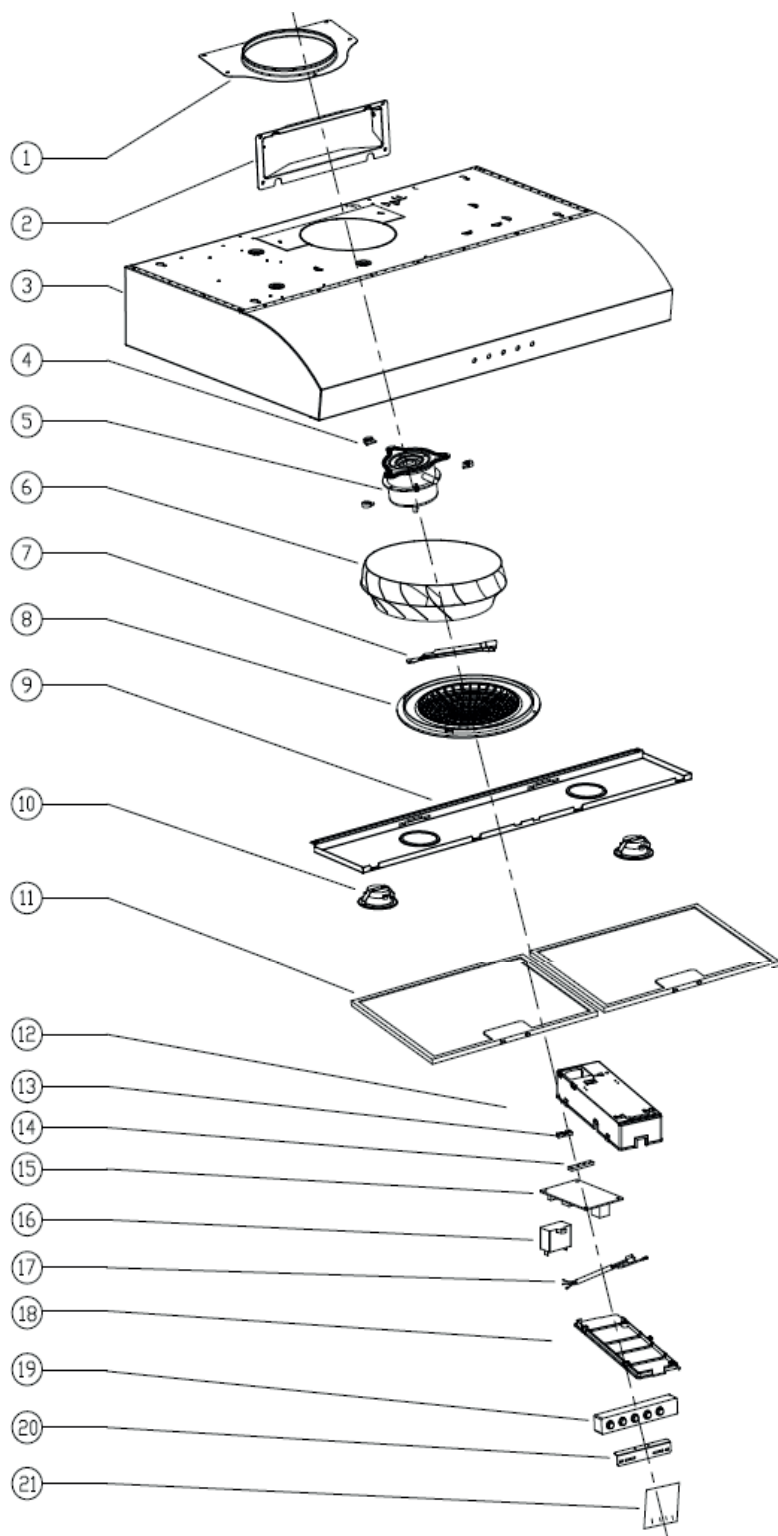


Range Hood Assembly



| No. | Description |
|-----|--------------------------------|
| 1 | Vent (round) |
| 2 | Vent (rectangle) |
| 3 | Housing |
| 4 | Motor buffer pad |
| 5 | Motor |
| 6 | Impeller |
| 7 | Trunking |
| 8 | Plastic mesh cover |
| 9 | Light panel |
| 10 | LED light (LSD-E2) |
| 11 | Alum filter |
| 12 | Junction box |
| 13 | Two-holes line pressing board |
| 14 | Four-holes line pressing board |
| 15 | PCB |
| 16 | Capacitor |
| 17 | External connecting wire |
| 18 | Junction box cover |
| 19 | Switch |
| 20 | Switch bracket |
| 21 | Screw bag |